



To Espoo POC in
Germany
The Netherlands

Landskab og Skov
J.nr. 2022-61826
Ref. TIJJE
Den 09-09-2022

Notification regarding the project of the deepening of Grådyb - fairway at Esbjerg Harbour

Legal basis

Under the Espoo Convention¹ on Transboundary Environmental Impacts, incorporated in the EIA and Environmental Assessment Directive², as well as the Danish Environmental Assessment Act³, the parties are obliged to notify and consult any affected countries, as well as carry out environmental assessments across national borders.

As the waterway is located in the Wadden Sea, this notification is sent in connection with the Espoo hearing of affected neighboring states, based on Article 7 of the Environmental Assessment Directive and Article 7 of the EIA Directive.

Description of the project

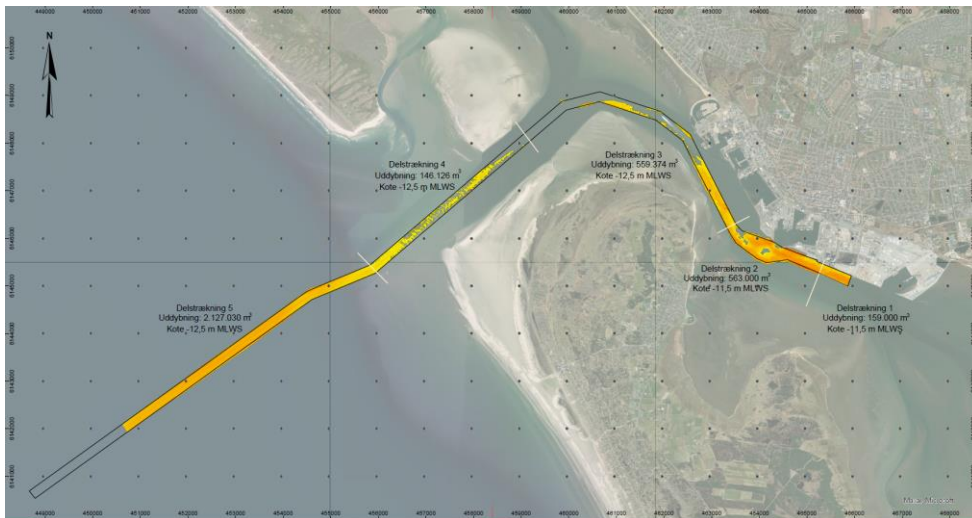
The municipal, self-governing Harbour of Esbjerg has applied for permission to deepen the navigation channel (Grådybet). The purpose of the deepening is to secure military mobility and to ensure the function of the port as a hub for large-scale offshore wind, and specifically the deepening must make the port accessible to larger ships.

The application requests that the fairway be deepened to a depth of -12.5 m MLWS (Mean Low Water Spring) in sections 3, 4 and 5. In sections 1 and 2 a depth of -11.5 m MLWS is applied for. In addition, a slope of 1:5 from the outer edge of the fairway to the surrounding seabed is required. In Esbjerg Harbour, the correlation between the depth points is: $DVR90 = MLWS + (-0.82 \text{ m})$.

1 Convention of 25 February 1991 on the assessment of the effects on the environment across national borders

2 Directive 2011/92/EU of 13 December 2011 on the assessment of the impact of certain public and private projects on the environment and Directive 2014/52/EU of 16 April 2014 amending Directive 2011/92/EU of 13 December 2011 on the assessment of the impact of certain public and private projects on the environment and Directive 2001/42/EC of 27 June 2001 on the assessment of the impact of certain plans and programs on the environment

3 Legislative Decree No. 973 of 25 June 2020 on environmental assessment of plans and programs and of concrete projects



The deepening of the fairway takes place in the Wadden Sea, and based on the information available, it cannot be ruled out that a deficit of sand will occur elsewhere in the Wadden Sea system.

Invitation to partake in the hearings

If you wish to participate in the environmental assessment process, or if you wish to submit comments on the transboundary environmental impacts, described in the attached draft of the delimitation of the report and which must be examined in the environmental report, **by October 12, 2022** you must notify us of your wish to partake or submit your comments by e-mail to **Espoo@mst.dk**, stating journal number: 2022-61826

Best regards

Timm Sonn-Juul
 Biologist | Espoo Point of Contact | EIA
 +45 20 57 74 37 | tijje@mst.dk